



EAST PARK ENERGY

East Park Energy

EN010141

**Statement of Community
Consultation**

September 2024

Version 03

EAST PARK ENERGY

Statement of Community Consultation

Version	Date	Status
01	February 2024	First draft
02	April 2024	Consultation draft
03	September 2024	Final

CONTENTS

1.0	Introduction	3
2.0	About Brockwell Storage and Solar (BSSL).....	4
3.0	East Park Energy	5
3.1	Introduction.....	5
3.2	The Proposals	5
3.3	Benefits of the Scheme	5
4.0	The Planning process	7
5.0	The statutory consultation programme.....	8
5.1	What will we Consult On?.....	8
5.2	Who will we Consult?	8
5.3	Consultation Zone	9
6.0	How will we consult?	11
7.0	Environmental information.....	13
8.0	Public Consultation.....	14
8.1	Non-Statutory Consultation	14
8.2	Publication of the SoCC	14
8.3	Statutory Consultation	15
9.0	Responses to the Consultation.....	17
9.1	Methods of responding	17
9.2	Consultation Report.....	17
9.3	Further Consultation	18
10.0	Consultation Timeline.....	19
11.0	Contact Us	20
	Appendix A.....	21

Abbreviations

Acronym	Definition
BESS	Battery Energy Storage System
BSSL	Brockwell Storage and Solar Limited
CPRE	Campaign to Protect Rural England
DCO	Development Consent Order
EIA	Environmental Impact Assessment
ES	Environmental Statement
GDPR	General Data Protection Regulation
GW	Gigawatt
MW	Megawatt
NSIP	Nationally Significant Infrastructure Project
PEIR	Preliminary Environmental Information report
RSPB	Royal Society for Protection of Birds
SoCC	Statement of Community Consultation
SoS	Secretary of State

1.0 INTRODUCTION

- 1.1.1 BSSL Cambsbed 1 Ltd, a wholly-owned subsidiary of Brockwell Storage and Solar Limited ('BSSL'), is putting forward a proposed application for a new solar and energy storage facility called East Park Energy ('the Scheme').
- 1.1.2 This document, known as a Statement of Community Consultation ('SoCC'), outlines the ways by which people living in the vicinity of the land required for the Scheme can engage with the proposed application during the statutory consultation.
- 1.1.3 The Scheme is a Nationally Significant Infrastructure Project and requires consent from the Secretary of State via a Development Consent Order ('DCO'). BSSL intend to submit an application for development consent for the Scheme ('the Application') in early 2025.
- 1.1.4 This document has been prepared pursuant to section 47(1) of the Planning Act 2008 and regulation 12 of the Infrastructure Planning (Environmental Impact Assessment) Regulations 2017. In preparing the SoCC, BSSL has consulted local authorities, whose views were taken into account and used to inform the final SoCC.
- 1.1.5 The Scheme is an 'EIA development' for the purposes of the Infrastructure Planning (Environmental Impact Assessment) Regulations 2017 ('EIA Regulations'). BSSL is therefore undertaking an Environmental Impact Assessment (EIA). It will submit an Environmental Statement ('ES') reporting the results of the EIA alongside the DCO application. This SoCC also sets out how BSSL intend to publicise and consult on the preliminary environmental information, as required by Regulation 12 of the EIA Regulations, in advance of the submission of the Application.
- 1.1.6 BSSL wants to listen to the views of the community to develop its proposals for the Scheme. This will allow BSSL to develop the Application responsibly and in a manner that is considerate towards local community interests.

2.0 ABOUT BROCKWELL STORAGE AND SOLAR (BSSL)

- 2.1.1 Proposals for East Park Energy are being developed by Brockwell Storage and Solar ('BSSL'), previously known as RNA Energy.
- 2.1.2 Founded in 2015, RNA Energy has been actively developing both solar and Battery Energy Storage System ('BESS') projects in the UK, and has gained consent for BESS and solar projects since then. Brockwell Holdings, the owner of Brockwell Energy, acquired RNA Energy on 13 March 2024. It has since rebranded RNA Energy as BSSL.
- 2.1.3 The deal marks a key milestone in Brockwell's strategy to strengthen its position as a significant player in the renewable energy sector – increasing its UK footprint and contributing to its goal of developing and building out 5 GW of installed renewable generation capacity by 2030.
- 2.1.4 Brockwell Energy has a portfolio of projects, initially based in Scotland, including Energy from Waste, onshore wind, solar and BESS. It is currently developing a number of projects, including North Kyle Wind Farm in East Ayrshire, and Earls Gate Energy Centre in Falkirk.
- 2.1.5 Although the company developing the project is BSSL, the special purpose vehicle that will submit the Application is BSSL Cambsbed 1 Ltd.

3.0 EAST PARK ENERGY

3.1 Introduction

3.1.1 The Scheme is on the boundary between Bedfordshire and Cambridgeshire, with the National Grid connection to the west of St Neots. The Scheme covers the administrative boundaries of Bedford Borough Council, Cambridgeshire County Council and Huntingdonshire District Council.

3.2 The Proposals

3.2.1 The Scheme covers approximately 766 hectares. The proposals include:

- An anticipated output from the solar arrays of up to 400 megawatts¹ (MW) of electricity, which would generate approximately 430 GWh of electricity per annum, enough electricity to supply approximately 108,000 homes.
- A 100 MW battery storage facility to manage the export of power available to the National Grid during times of peak demand, as well as providing Grid balancing services.
- A connection to National Grid's substation at Eaton Socon.
- Works to create, enhance and maintain the natural environment, including the delivery of at least 10% biodiversity net gain.
- The introduction of the East Park Legacy Fund, offering financial opportunities for the nearby communities.

3.3 Benefits of the Scheme

3.3.1 We have identified the following benefits of the Scheme:

- To deliver Net Zero, the UK Government forecasts that up to 70 gigawatts (GW) of solar energy could be required nationally by 2035. The Scheme would double² the existing solar and wind renewable energy capacity in

¹ Measured in Alternating Current (AC)

² Derived from <https://www.gov.uk/government/statistics/regional-renewable-statistics>

Bedford Borough and Huntingdonshire District, adding approximately 0.4 GW towards the national target.

- There is an existing target to decarbonise the UK's electricity system by 2035. Meeting this goal will require huge growth in the renewables sector. There is capacity to connect into the network at Eaton Socon substation ahead of this deadline, meaning that the Scheme will support the Government's decarbonisation targets.
- The East Park Legacy Fund will offer financial contributions to local projects, providing a benefit for those living locally to the Scheme.
- The proposals include a range of works to create, enhance and maintain the natural environment in the local area, including through the delivery of at least 10% biodiversity net gain.

4.0 THE PLANNING PROCESS

- 4.1.1 The Scheme is classified as a Nationally Significant Infrastructure Project (NSIP) under the Planning Act 2008. This is because its proposed generating capacity exceeds 50 MW. BSSL must therefore make an application for development consent to the Secretary of State for Energy Security and Net Zero. Whilst the application is made to the Secretary of State (SoS), the examination of the application for development consent is carried out by the Planning Inspectorate for England. Following this examination, the Planning Inspectorate will make a recommendation to the SoS as to whether the application for development consent should be granted or refused; however, the ultimate decision lies with the SoS.
- 4.1.2 Consultation with the local community is essential to delivering effective development and is required by the Planning Act 2008. Once the Planning Inspectorate has received the application for development consent, it will consider whether to accept the application for examination. To be accepted, BSSL must satisfy the Planning Inspectorate that the pre-application consultation, both with statutory consultees (such as the local planning authorities and expert bodies, such as Natural England) and local communities, has been undertaken in accordance with legal requirements, which include compliance with this document.
- 4.1.3 To demonstrate this to the Planning Inspectorate, BSSL will submit a Consultation Report alongside the application for development consent, outlining how the statutory consultation has been carried out in accordance with the Planning Act 2008. This report will contain details of the statutory consultation methodology and the feedback submitted in response to the consultation. Explanation will also be provided as to how BSSL have had regard to feedback and how it has influenced the Scheme.

5.0 THE STATUTORY CONSULTATION PROGRAMME

5.1 What will we Consult On?

5.1.1 BSSL will be seeking feedback on all aspects of the proposed application for the Scheme. This will involve asking local community members to give their views about the proposals. For example, BSSL will be seeking feedback on:

- The Preliminary Environmental Information Report, which will identify the receptors and the likely significant effects of the Scheme.
- How BSSL can ensure the Scheme manages any disruption for local residents during construction, operation, and decommissioning works.
- What benefits the Scheme could bring on both a local and national level, such as contributing towards Net Zero and providing security of energy supply.
- How BSSL can best realise the long-term benefits of the Scheme.

5.1.2 The full extent of the Scheme will be consulted on as part of the process. Draft outline construction methodologies for the proposed application will also be consulted on. More information will become available regarding these aspects as our proposals develop.

5.2 Who will we Consult?

5.2.1 This statutory consultation is open to anyone who may be interested or in any way feels impacted by our proposals to develop the Scheme. Our communication channels (detailed later in this SoCC) can be used by interested parties, organisation or individuals to get in touch with the development team to find out more information and comment on our proposals.

5.2.2 Under section 47 of the Planning Act 2008, BSSL has a duty to consult the local community. As such, BSSL has defined a consultation zone for the purpose of publicising the consultation directly to the local community. The consultation zone is described below in section 5.3 of the SoCC.

5.2.3 We will also consult the following groups and individuals:

- Parish councils representing parishes within the immediate vicinity of the Scheme.
- Local Authority Councillors representing wards within and bordering the consultation zone.
- Members of Parliament (MPs) representing constituencies within and bordering the consultation zone.
- ‘Seldom heard groups’ within the consultation zone, who have been drawn to our attention by Local Authorities and Parish Councils. These groups, which are listed in Appendix A, represent people who are unlikely to respond to traditional consultation techniques and may need additional support to access materials.
- Local interest groups, such as residents’ associations, community groups and groups with particular specialisms, such as local heritage or wildlife.

5.3 Consultation Zone

5.3.1 A consultation zone has been established following discussions with the local authorities. The zone is designed to capture the communities and elected representatives closest to the Scheme. It extends to the parish council boundaries of:

- Bolnhurst & Keysoe Parish Council
- Great Staughton Parish Council
- Hail Weston Parish Council
- Little Staughton Parish Council
- Pertenhall & Swineshead Parish Council
- Staploe Parish Council

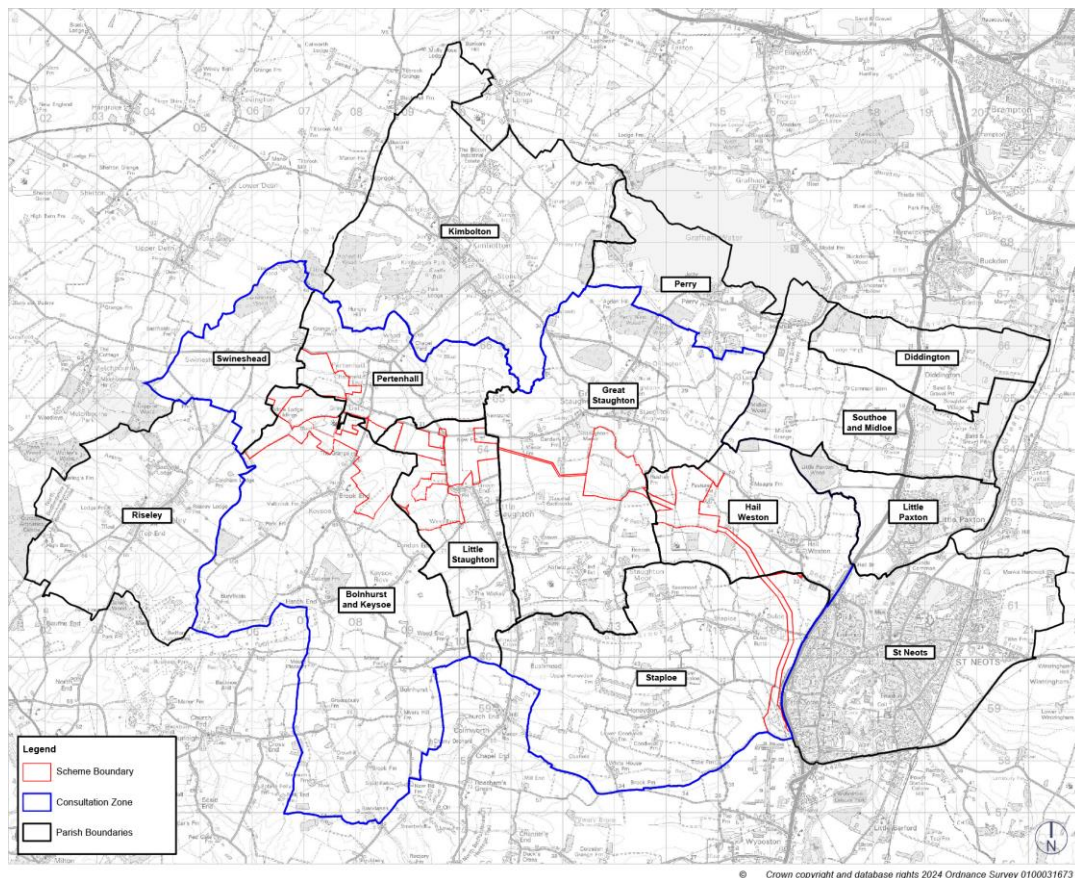
5.3.2 Properties within the consultation zone will receive a leaflet informing them of the statutory consultation and how to provide feedback through the post. This ensures that all of the immediate local community around the site is consulted in accordance with Section 47 of the Planning Act 2008.

5.3.3 In addition, we will also consult the following neighbouring Parish and Town Councils on behalf of their residents:

- Kimbolton and Stonely Parish Council
- Perry Parish Council
- Riseley Parish Council
- St Neots Town Council
- Southoe and Midloe Parish Council
- Little Paxton Parish Council
- Buckden Parish Council

5.3.4 The consultation zone is shown on Figure 1 below, together with the Scheme boundary from the non-statutory consultation.

Figure 1 - A map of the Consultation Zone



6.0 HOW WILL WE CONSULT?

6.1.1 We have identified a consultation zone and outlined how we will publicise the statutory consultation to the community. The table below sets out how we will consult the community.

Table 1: Proposed Consultation Methods

How we will publicise the statutory consultation	How we will consult
<ul style="list-style-type: none"> • Distributing consultation leaflets with details of the consultation website, communication channels and exhibition events to all addresses within the consultation zone. • The consultation website will be updated for people to find out more information and provide their feedback on the proposed application: www.eastparkenergy.co.uk • Press releases will be issued to local news outlets, such as Cambridgeshire Live, Hunts Post and Bedford Today. A press notice including a description of the scheme and deadline for comments will be displayed in the London Gazette and a local newspaper. • Direct mail letters to Councillors, MPs, seldom heard groups within the consultation zone and other outreach method as appropriate, such as target social media collateral and sharing information at key community locations. Community and seldom heard Groups identified by District and Parish Councils are listed in Appendix A to this SoCC and will be consulted. • Social media adverts with details of the proposed application and the consultation will be distributed at a 10-mile radius to the site. The social media adverts will be displayed on Facebook, Instagram and TikTok. This will provide people who are interested in the proposed application but live outside the consultation zone an opportunity to give their feedback on the proposals. 	<ul style="list-style-type: none"> • Consultation leaflets. • Letters to seldom heard groups and other outreach methods as recommended to us by local authorities. • A website – www.eastparkenergy.co.uk – with details of the proposals for the community to review and provide comments on. The website will include a feedback form, which will also be available in paper copy. • A community information line will be available for anyone who has questions about the proposals via 0808 258 5991 Monday – Friday 9am to 5:30pm. Detail of the community information line will be included on consultation material provided to the public. • A consultation email address will also be available for people to ask questions and send their comments to: info@eastparkenergy.co.uk. • Social media adverts will publicise the consultation and include a link to find out more and provide feedback via the consultation website.

-
- | | |
|--|--|
| <ul style="list-style-type: none">• Statutory Notices will be placed in accordance with the provisions of the Planning Act 2008. | |
|--|--|

6.1.2 If any consultees need information available on the Scheme website in a different format, such as accessible PDF, large print, easy read, audio recording or braille, they can call the community information line to request this. The request will be considered, and a response provided, within 10 working days.

7.0 ENVIRONMENTAL INFORMATION

- 7.1.1 BSSL will undertake an EIA of the Scheme. This involves an identification of environmental receptors that have the potential to be impacted by the Scheme, which can include people, wildlife, habitats, and places. An assessment will be made of the likely significant effects of the Scheme on these receptors and, where appropriate, mitigation will be proposed to avoid, minimise, reduce or offset significant adverse effects.
- 7.1.2 A full Environmental Statement ('ES') setting out the environmental effects of the Scheme will be prepared and submitted with the application. At the consultation, BSSL will present a Preliminary Environmental Information Report ('PEIR'). The PEIR will report on the EIA work undertaken up-to the time of the start of statutory consultation and will enable all consultees to get a clear understanding of the likely environmental effects of the Scheme. BSSL will be actively seeking consultee's comments on the PEIR, and there will be the opportunity for both the design of the Scheme and the ongoing EIA work to consider any comments received through the consultation.
- 7.1.3 The EIA of the Scheme has already begun, and a Scoping Report was submitted to the Planning Inspectorate in October 2023. The Scoping Report set out the proposed scope of the EIA, along with an initial identification of potential receptors and effects. In response to the submission of the Scoping Report, the Planning Inspectorate adopted a Scoping Opinion in December 2023. BSSL is engaging with key stakeholders and statutory environmental bodies following receipt of the Scoping Opinion, and a summary of this consultation and actions taken will be set out in the PEIR. Both the Scoping Report and the Scoping Opinion for the Scheme are available on the National Infrastructure Planning website at the [East Park Energy project page](#) (Planning Inspectorate ref: EN010141).

8.0 PUBLIC CONSULTATION

8.1 Non-Statutory Consultation

- 8.1.1 The non-statutory consultation period ran from Tuesday 17 October 2023 to Tuesday 21 November 2023, spanning five weeks. Its primary objective was to introduce the Scheme and give local communities and stakeholders the opportunity to provide initial feedback at an early stage in the process. This initial phase sought opinions and contributions toward the Scheme's development. Recognising the importance of local insights, we actively sought and will continue to value community input throughout the pre-application process and will record the outcome of the consultation in a Consultation Report which will be submitted as part of the Application.
- 8.1.2 Various initiatives were undertaken during the non-statutory consultation, including the launch of a consultation website, issuing press releases and a press notice, reaching out to political and statutory stakeholders, running social media advertisements, and hosting three public exhibition events.
- 8.1.3 A total of 372 submissions were received during the consultation. While a large number were sympathetic to the necessity of renewable energy, many expressed concerns about the Scheme's location, leading to their inability to lend support. Additionally, there were queries and recommendations regarding ways we could enhance biodiversity and safeguard Public Rights of Way within the Scheme.
- 8.1.4 For further details regarding the non-statutory consultation, the Non-Statutory Consultation Report is available on the consultation website at www.eastparkenergy.co.uk

8.2 Publication of the SoCC

- 8.2.1 This SoCC has been subject to prior consultation with Huntingdonshire District Council, Bedford Borough Council and Cambridgeshire County

Council. The SoCC has been published and publicised in accordance with the requirements of the Planning Act 2008.

8.3 Statutory Consultation

8.3.1 The statutory consultation will run for five weeks from Tuesday 24 September to Tuesday 29 October 2024. This statutory consultation, in accordance with Section 47 of the Planning Act 2008, will allow us to update the local community on the Scheme, including how the feedback we received during the non-statutory consultation has influenced the proposed application for East Park Energy.

8.3.2 Four public consultation events are proposed to take place during the consultation period. The dates, times and locations of these events are outlined in Table 2.

Table 2: Proposed public consultation events

Date	Time	Location
Tuesday 1 October	2pm-7pm	Keysoe Village Hall, Elm Tree Grove, Keysoe, MK44 2JE
Wednesday 2 October	2pm-7pm	Little Staughton Village Hall, Colmworth Road, Little Staughton, MK44 2BX
Friday 11 October	2pm-7pm	Hail Weston Village Hall, 109 High Street, Hail Weston, PE19 5JS
Saturday 12 October	11am-3pm	Great Staughton Village Hall, Green Lane, Great Staughton, PE19 5DG

8.3.3 Additionally, BSSL is proposing to hold a day of one-to-one meetings with the project team during the consultation period. Appointments will be available on a first come first served basis and will enable members of the local community to have more detailed conversations with the project team. Table 3 includes details of these proposed meetings.

Table 3: Proposed one-to-one meetings

Date	Time	Location
Tuesday 22 October	10am-2pm	Pertenhall Village Hall, Swineshead Road, Pertenhall, MK44 2AT

8.3.4 If, for any reason, it is unfortunately necessary to cancel a scheduled event, this information will be published on the Scheme website. If practicable, a notice will also be placed at the venue.

9.0 RESPONSES TO THE CONSULTATION

9.1 Methods of responding

9.1.1 Respondents will be able to share their feedback on Scheme by:

- Submitting an online feedback form.
- Filling in a physical feedback form.
- Sending a written letter.
- Sending an email.

9.1.2 Consultation responses received via any other method than those listed above, such as through social media, will not be formally recorded as part of the consultation.

9.1.3 Responses given orally, such as via telephone, will be considered in exceptional circumstances on a case-by-case basis where someone may not otherwise be able to respond to the consultation. Queries and questions can be taken from telephone correspondence, but all feedback needs to be in writing by the methods provided above, unless there are exceptional circumstances.

9.2 Consultation Report

9.2.1 Following the close of the statutory consultation, all feedback will be reviewed and analysed to understand key themes and concerns. A Consultation Report will be produced as part of our application for development consent. The report will set out how the feedback from the consultation has shaped and influenced the final proposals. Responses to the consultation and extracts of responses may be published as part of the report unless specifically stated in the response. Any responses that are published will have all personal details redacted.

9.3 Further Consultation

- 9.3.1 If, following the statutory consultation, BSSL considers it is necessary to undertake further targeted consultation, this would be undertaken, so far as relevant and proportionate to the scale of the change made, in accordance with the principles and methods set out in this SoCC.

10.0 CONSULTATION TIMELINE

October – November 2023: Non-Statutory Consultation

- 10.1.1 This phase of consultation introduced the community to the Scheme and provided the community and other consultees an opportunity to give feedback on the initial proposals.

September – October 2024: Statutory Consultation

- 10.1.2 BSSL will consult the community on the revised proposals as explained in this SoCC. The consultation will also explain how the feedback we received during the non-statutory consultation has influenced the Scheme. In addition, we will consult statutory consultees (as outlined in sections 42, 44, 46 and 48 of the Planning Act 2008) and others on the revised proposals.

Q1 2025: Submission of Application for Development Consent

- 10.1.3 BSSL will consider all the feedback received and will refine its proposals before submitting the application for development consent to the Planning Inspectorate, which will include the Consultation Report. If the application is 'accepted' it will go through a pre-Examination period of typically 3 to 4 months, prior to a six-month formal Examination period.

Summer/Autumn 2025: Examination

- 10.1.4 The Examination period is a set process with statutory timescales. The application for development consent will be scrutinised by an independent inspector(s) appointed by the Planning Inspectorate (known as the 'Examining Authority'). There will also be an opportunity to make written representations and participate in public hearings as part of the Examination.

2026: Decision

- 10.1.5 The Examining Authority will make a recommendation on whether the application for development consent should be approved before the Secretary of State for Energy Security and Net Zero makes the final decision.

11.0 CONTACT US

11.1.1 You can get in touch by:

- Emailing us at: info@eastparkenergy.co.uk.
- Calling our community information line at: 0808 258 5991 (Monday to Friday, 9am to 5:30pm).
- Writing to us at: Freepost EAST PARK ENERGY.

11.1.2 Data will be protected in accordance with our obligations under both the Data Protection Act 2018 and the General Data Protection Regulation (GDPR) 2016. This will apply to data processed electronically and on paper.

APPENDIX A

In preparing the SoCC, BSSL asked local authorities to recommend seldom heard groups to engage with at the statutory consultation.

Huntingdonshire District Council made a number of recommendations that are contained in Table 2 below. They also recommended that we seek the views of the Parish Councils. The responses from the Parish Councils are contained in Table 3.

BSSL will consult with all these groups at Statutory Consultation.

Some of these groups, such as RSPB and BHS, were also suggested as consultees during the non-statutory consultation.

Table 4: Recommendations from Huntingdonshire District Council

Group
Conygear Centre
St. Neots Voluntary Welfare Association
St. Neots Community Support
St. Neots Museum
St. Neots and Huntingdon Methodist Circuit
Neotists
St. Neots Local History Society
The Sun Network
Breakfast Church
Messy Church
Loves Farm Ladies

Group
Teatime Praise
St. Neots Volunteer Centre
Walk and Talk 4 Men St. Neots
Royal Naval Association
St. Neots Round Table
St. Neots TimeBank
Fair to Nature
Love's Farm Community Association
St. Neots FLAG (Flood Action Group)
Priory Park Friends Group

Table 5: Recommendations from Parish Councils

Group
Great Staughton Primary School
St Andrews Church
St Neots Cycling Club
Great Staughton WI
Great Staughton Community Land Trust
Parish Charities
Beds, Cambs and Northants Wildlife Trust

Group
Huntingdonshire Wildlife Trust
Hunts Ramblers
Oakley Hunt
North Bucks Beagles
CPRE
CPRE Bedfordshire
CPRE Cambridgeshire and Peterborough
Ramblers
British Horse Society
British Horse Society - Bedfordshire
British Horse Society- Cambridgeshire
RSPB- Royal Society for the Protection of Birds

